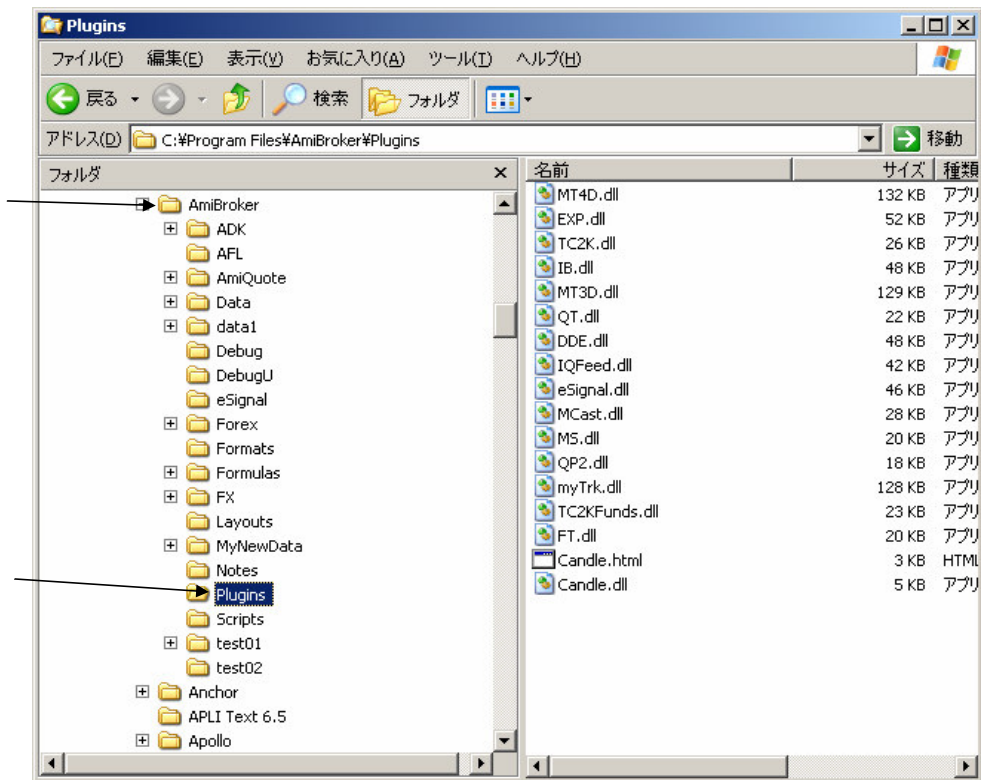
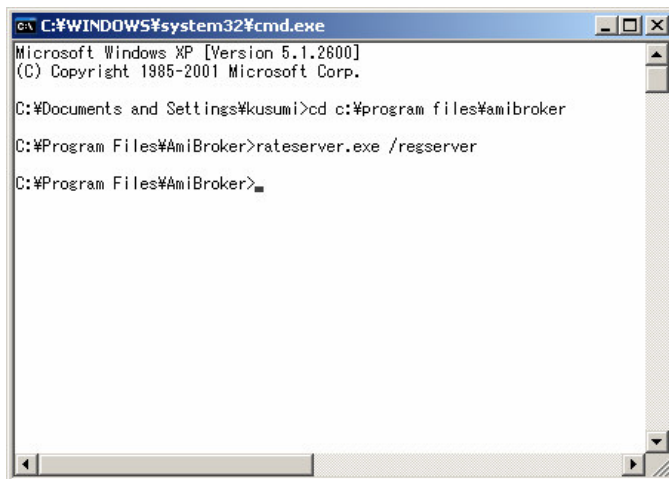


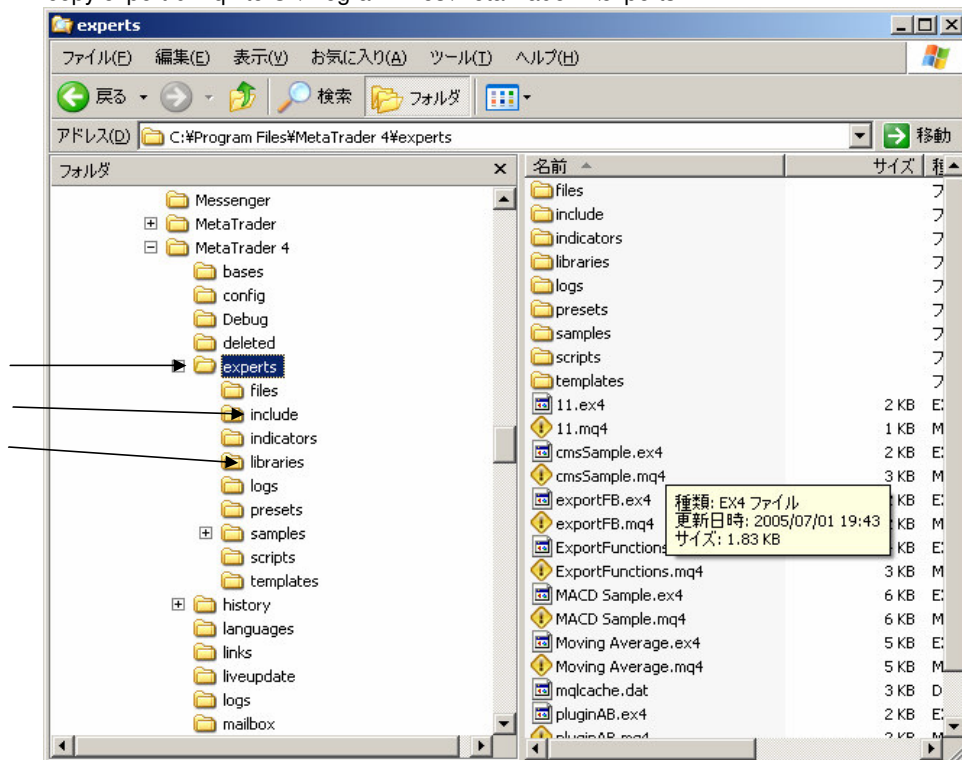
- 1 copy MT4d.dll to C:\Program Files\AmiBroker\Plugins
copy RateServer.exe to C:\Program Files\AmiBroker



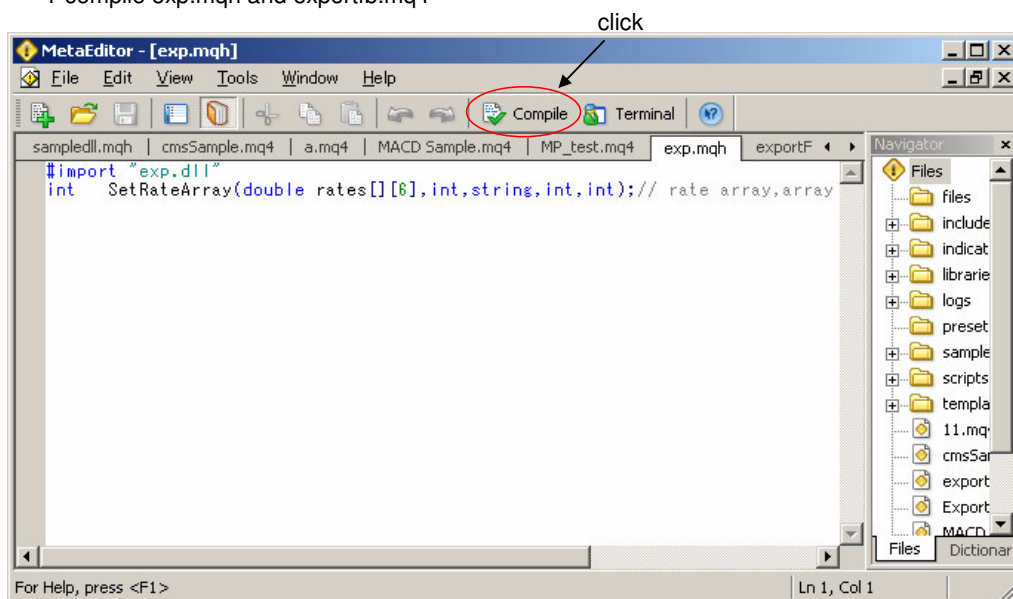
- 2 open dos prompt and enter command
registry ole server



- 3 copy exp.dll to C:\Program Files\MetaTrader 4\experts\libraries
copy exp.mqh to C:\Program Files\MetaTrader 4\experts\include
copy exportfb.mq4 to C:\Program Files\MetaTrader 4\experts



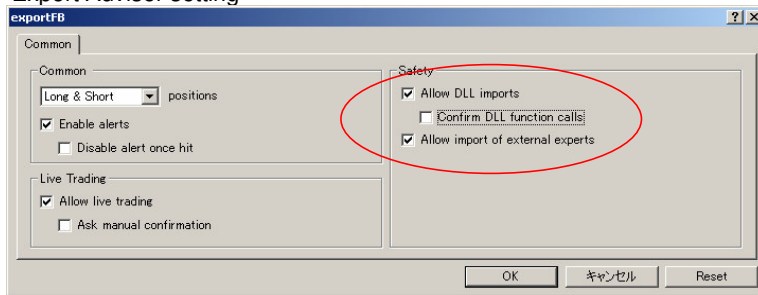
- 4 compile exp.mqh and exportfb.mq4



- 5 run metatrader4
- drag exportFB and run Expert Advisor
- TimeFrame is H1



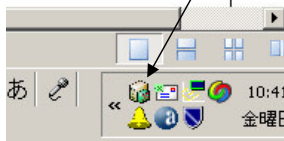
Expert Advisor setting



click and enable EA EA is running



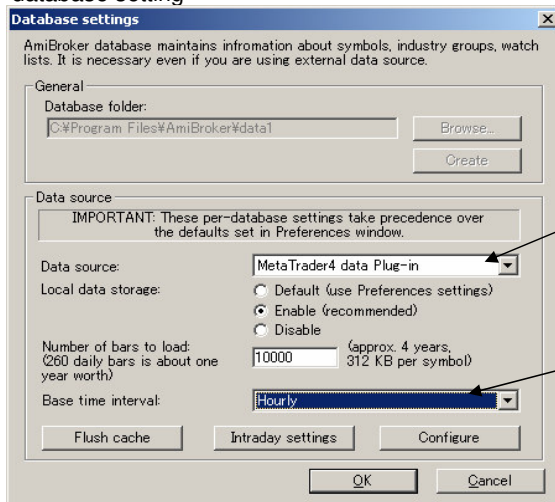
icon is shown in task tray
running rateserver.exe



click left button :show window
click right button :hide window

6 run Amibroker

database setting



add symbol
and click connect



base time interval must be same metatrader4 timeframe
time interval is M1 or M5 or H1 or D1
rateserver program transfer historical data stored in mt4 to amibroker.
if you want to get long historical data, first you collect historical data in mt4 platform

If you want to get other symbol data, for example USDJPY open chart window USDJPY in mt4, and drag exportFB and run EA and add symbol USDJPY in amibroker.

